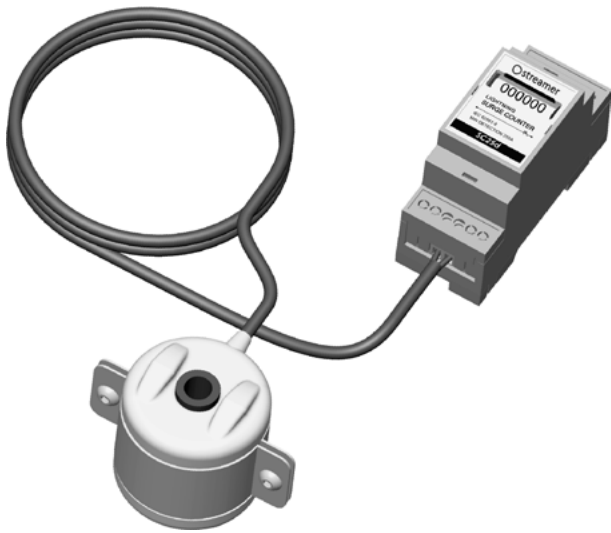


SURGE COUNTER SC25d

LSC LIGHTNING
STRIKE COUNTER

SURGE COUNTER SC25D



HIGH SENSITIVITY UNIVERSAL COUNTER

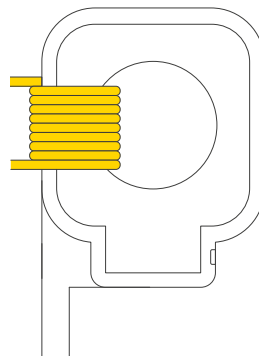
- Monitoring of lightning protection equipment: lightning rod, surge arrester, SPD, ground lead, ground rod;
- high measurement performance: from 250A minimum to 100kA detection;
- counts lightning impulses separated by more than 50ms;
- indoor device: IP42;
- outdoor and rugged version of split core current transformer IP68;
- no maintenance: self powered device, no battery;
- easy cable installation: 5 to 25mm cable diameter;
- up to 20m cable length.

Streamer Electric Lightning Strike Counter is meant to count the number of lightning strikes based on the current flowing in a conductor.

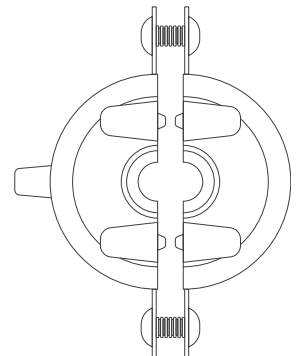
Surge Counter can be installed easily on the ground leads even on existing installations thanks to its split core transformer.

The DIN frame counter shall be back mounted on a DIN rail, up to 20m from the measurement point.

The CT and the connecting cables exists in 2 versions Indoor and outdoor IP68 rugged.



Indoor CT



Outdoor CT

FEATURES

- Easy installation: any place on an earthing wire
- Performance monitoring simplified: indication unit can be even at eyes level
- High sensitivity: 250 A minimum sensitive current

Lightning events are composed of up to 10 strokes (impulses) and 3 in average. The interval between lightning stroke is in average 50 ms, the SC25d is able to count every stroke/impulse during a lightning event down to 250 A so you won't miss a thing.

Minimum discharge 8/20 μ s current counted, I_{nmin}	250 A
Maximum discharge 8/20 μ s current counted, I_{nmax}	100 kA
Minimum impulse 10/350 μ s discharge current counted, I_{impmin}	250 A
Maximum impulse 10/350 μ s discharge current counted, I_{impmax}	100 kA
Conductor diameter range (mm)	a) 5-16 mm with maximum sensitivity b) 17-26 mm reduced sensitivity
Counts lightning impulse separated by more than 50ms	

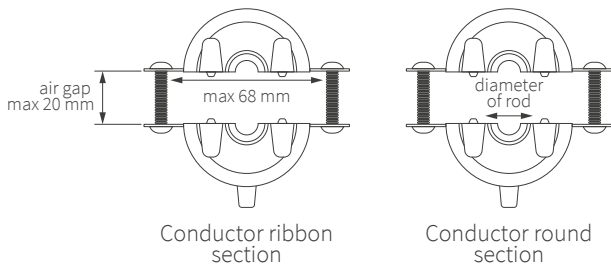
TECHNICAL CHARACTERISTICS

Earthing connection	
Earthing conductor diameter range, mm	Outdoor version : 5 to 16 mm Indoor version : 2 to 12 mm
Maximum distance between display and sensor	20 m
Installation on the conductor	in parallel - clamped
Lightning event counter	
Indication of counter	6 digits
Type of display	Mechanical
Minimum discharge peak current detected - 8/20 μ s waveform - IEC 62561-6	Outdoor version : 250 A Indoor version : 300 A
Maximum discharge peak current detected - 10/350 μ s waveform - IEC 62561-6	100 kA
Minimum number stroke registration rate	> 2 counts/sec
Minimum time between 2 stroke for registration	50 ms
Voltage drop on terminal	< 1 V
Long duration current withstand capability	2500 A for 4 ms
High current withstand capability	100 kA
Frequency, Hz	47 to 63
Battery power supply	NO
Self powered	YES
Reset counter method	NO
Memory rom - storage of last counter value	NO
Weight, kg	0.5

TECHNICAL CHARACTERISTICS

ENVIRONMENTAL CONSTRAINTS	
Temperature - C	Class C2: -40 to +70
Protection class	Outdoor version : IP68 Indoor version : IP65
Max altitude - m	2000
Atmospheric pressure - kPa	70 to 106
Standards/test	IEC 62561-6:2018
Label includes	Hardware version number, serial number, manufacturing batch
Type of surge counter as per IEC 62561-6:2018	Type 1 and Type 2

SPLIT CORE CHARACTERISTICS



The outdoor split core is suitable for ground lead with diameters from 5 to 26 mm. 250A minimum detection is achieved for outdoor type split core diameters from 5 to 16 mm.

For diameters or air gaps above, the table below provides minimum detection current.

Minimum discharge current, 8/20 μ s, A								
	Air gap	0	2	4	6	10	15	20
	Diameter of rod/ conductor, mm	<16	16.1	16.5	17.1	18.8	21.9	25.6
Minimum discharge current, 8/20 μ s, A								
Conductor length	3 m	250	350	450	500	600	650	700
	10 m	250	370	500	600	700	800	900
	20 m	320	400	600	700	900	1000	1000

	Indoor CT	Outdoor CT
Supported diameter of conductor	< 13 mm	< 25.6 mm
Air gap adjustment	No	For clamping with conductor > 16 mm diameter

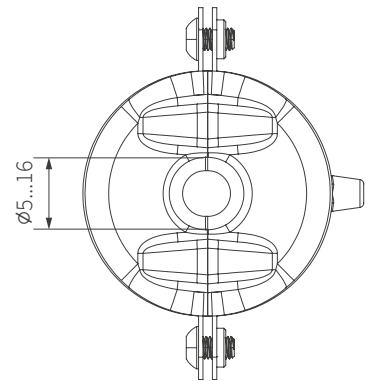
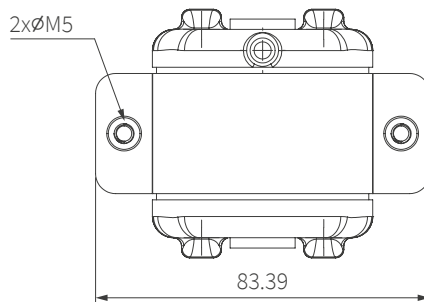
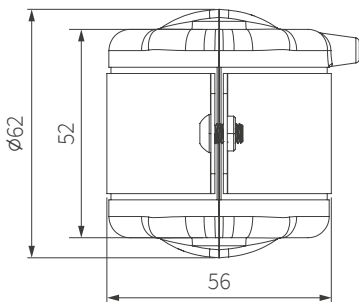
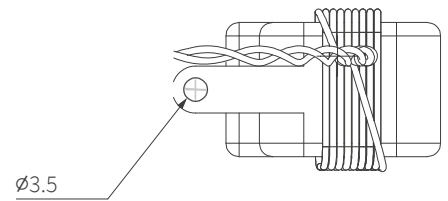
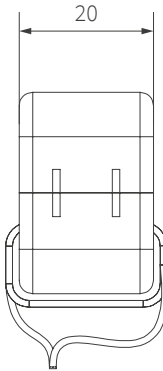
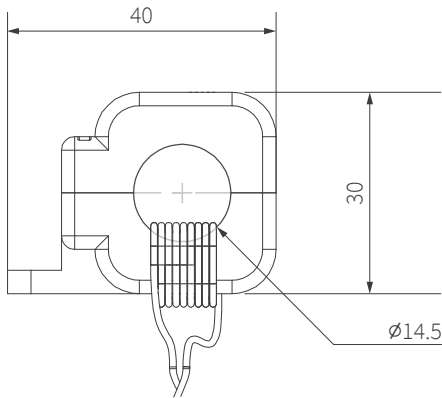
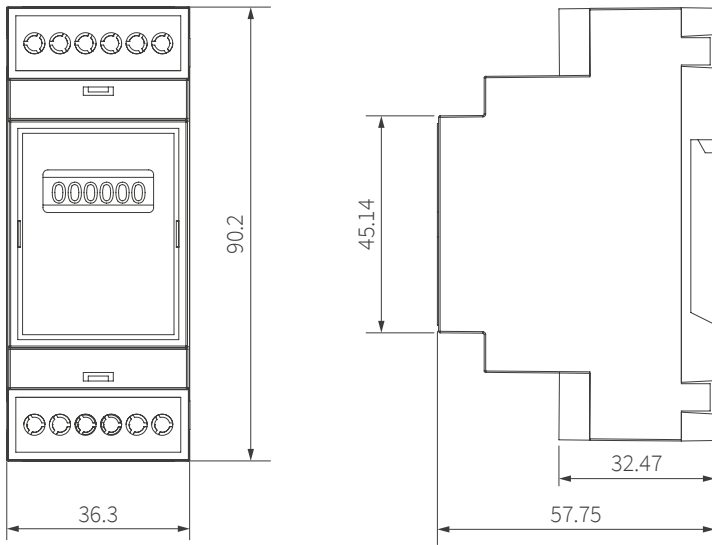
Minimum discharge current, 8/20 μ s, A		
Conductor length	Indoor CT	Outdoor CT
3 m	300	250
10 m	400	250
20 m	1000	320

The 2 versions of split core are suitable to clamp with the earthing cable or ground rod with different diameters.

Minimum discharge peak current detection/conductor length

The tables below provide each CT type's current detection performance and the supported diameter of the conductor.

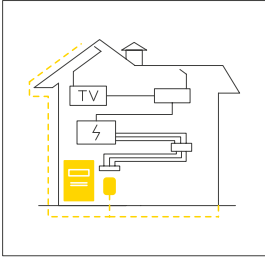
DIMENSIONS & PARTS



MAINTENANCE

Streamer Electric Lightning Strike Counter requires no maintenance and its life expectancy is above 10 years.

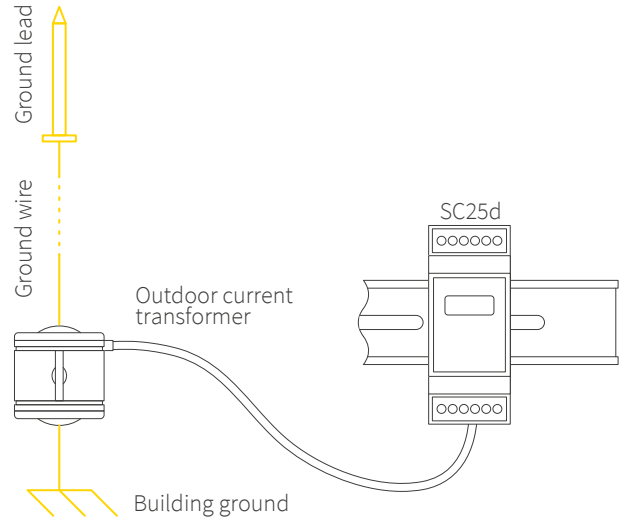
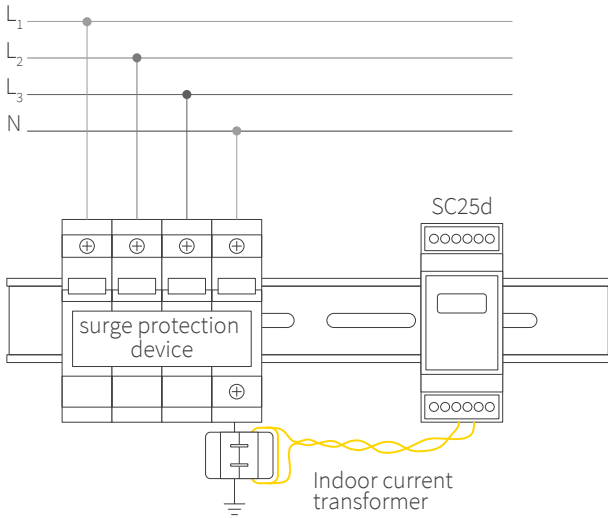
INSTALATION



On building SPD



On buildings ground lead



PRODUCT RANGE

	Analogue output	Connection cable	Reference
SC25d	WITH Indoor CT	3 meters	LL.SC.E014.03.WW
		10 meters	LL.SC.E014.10.WW
		20 meters	LL.SC.E014.20.WW
	WITH outdoor rugged IP68 CT and cable	3 meters	LL.SC.E016.03.WW
		10 meters	LL.SC.E016.10.WW
		20 meters	LL.SC.E016.20.WW

STREAMER ELECTRIC AG, HQ

Technopark Graubünden, Bahnhofstrasse 11,
7302 Landquart, Switzerland

+41 81 2500525
office@streamer-electric.com
www.streamer-electric.com

STREAMER CHINA

11th floor, Building A. Sanlitun SOHO, Workers
Stadium North Road No.8 Yard. Chaoyang District,
Beijing, China

+86 8565 1663
office_bjs@streamer-electric.com

STREAMER INDONESIA

Wilson Walton Building,
Jl. Raya Tanjung Barat 155 Jagakarsa,
Jakarta, Indonesia

+62 21 7884 0737
office_jkt@streamer-electric.com

WEBSITE



LINKEDIN



YOUTUBE

